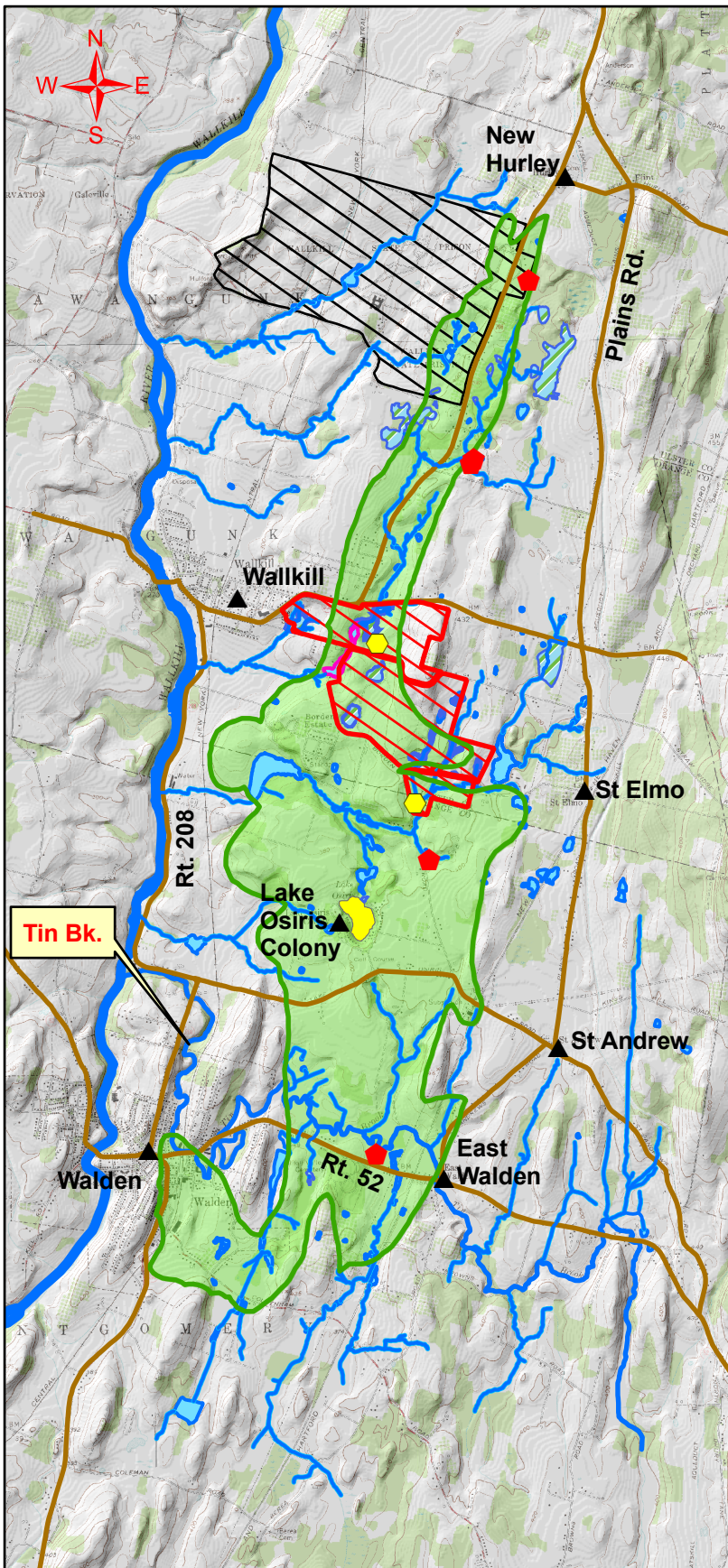


# Tin Brook Valley Aquifer - Will Large-Scale Development Jeopardize Water Quantity & Quality?

The Tin Brook Valley aquifer provides an important water resource to area users. Its sustained yield has a finite limit and may already be near its maximum carrying capacity. Detailed mapping of streams reveals several large areas above the aquifer that have no surficial drainage. These areas of kettle holes drain internally - thus providing direct recharge to the Tin Brook Valley aquifer. Donner Trust lands are central to the aquifer recharge area. It is critical that planned large-scale development document potentially excessive quantities of aquifer water withdrawal and related water quality impacts.



Tin Bk.

Data Sources:  
 Geologic & Hydrologic Interpretation:  
 HydroQuest, Inc.  
 Project Boundaries:  
 Engineering Properties  
 DRGs: USGS/NYSDEC  
 DEMs: USGS/NYSDEC  
 Projection: UTM (meters)  
 Datum: NAD27, Zone 18  
 Digitizing & Cartography:  
 HydroQuest Sept. 2007  
 Prepared For: Friends of Borden Home Farm

## Legend

- ~ Tin Brook Aquifer
- Donner Trust Parcels
- Water Supply Wells
- Proposed Well Sites
- Streams
- Wetlands
- Ponds
- Lake Osiris
- Correctional Facility
- Town Centers
- Major Roads

Paul A. Rubin  
 HydroQuest  
 P.O. Box 387  
 Stone Ridge, N.Y. 12484  
 845-657-8111  
[hydroquest@yahoo.com](mailto:hydroquest@yahoo.com)

